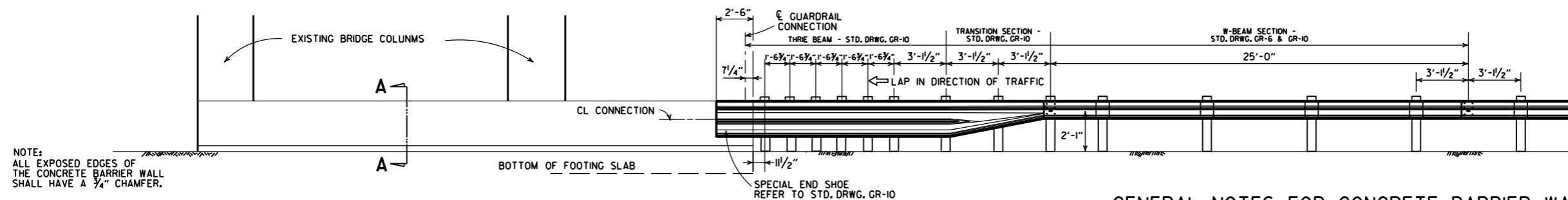


AT LEAST ONE 1/2" JOINT SHALL BE CONSTRUCTED IN THE CONCRETE BARRIER WALL. JOINTS SHALL BE EQUALLY SPACED AT A MAXIMUM OF 25'-0" O.C. FILL JOINT WITH PREFORMED JOINT FILLER.

PLAN OF CONCRETE BARRIER WALL

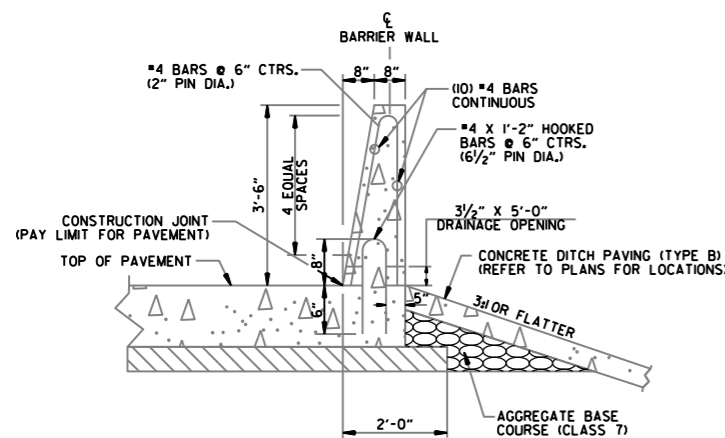


ELEVATION OF CONCRETE BARRIER WALL

GENERAL NOTES FOR CONCRETE BARRIER WALLS

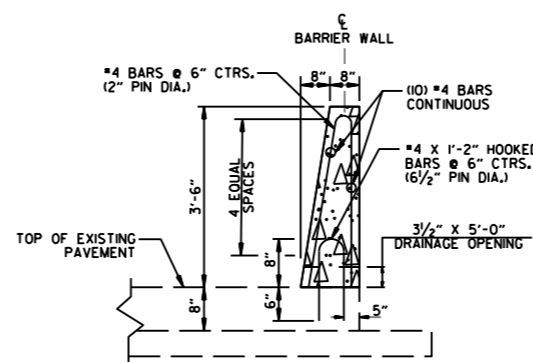
- ALL BARRIER WALLS SHALL BE CONSTRUCTED IN ACCORDANCE WITH SECTION 631 OF THE STANDARD SPECIFICATIONS, 2014 EDITION.
- CONTRACTION JOINTS REQUIRED @ 15'-0" MAXIMUM SPACING FOR BARRIER TYPES MEDIAN A, SIDE A. A 30'-0" MAXIMUM SPACING IS REQUIRED FOR TYPES MEDIAN C, SIDE C, D & E.
- ALL CONTRACTION JOINTS TO BE FORMED IN FRESH CONCRETE ON TOP AND IN SIDES OF BARRIER WALL.
- DOWEL BARS FOR BARRIER TYPES MEDIAN A, SIDE A WILL NOT BE REQUIRED IF BARRIER AND MINIMUM 4' WIDE BASE ARE CAST AS A COMPLETE UNIT.
- CONTRACTION JOINTS ARE NOT PERMITTED AT THE DOWEL BAR LOCATIONS.
- ALL EXPOSED EDGES OF CONCRETE BARRIER WALL SHALL HAVE A 3/4" CHAMFER.
- THE DESIGN OF BARRIER WALL TYPES SIDE C, D & E IS BASED ON A MINIMUM FOUNDATION BEARING CAPACITY OF ONE TON PER SQUARE FOOT. UNSTABLE FOUNDATION MATERIAL SHALL BE REMOVED AND REPLACED TO PROVIDE A FIRM FOUNDATION AS DIRECTED BY THE ENGINEER.
- SPACING BETWEEN EXPANSION JOINTS SHALL NOT EXCEED 400 FT FOR BARRIER TYPES MEDIAN A AND SIDE A OR 120 FT FOR BARRIER TYPES SIDE C, D & E. EXPANSION JOINTS SHALL BE FORMED USING 1" PREFORMED JOINT FILLER. CONTINUOUS REINFORCEMENT SHALL BE CUT 2" CLEAR OF EXPANSION JOINTS.
- CONSTRUCT DRAINAGE OPENINGS AT EVERY 50' O.C. AND AT SAGS IF SHOWN ON THE PLANS. DOWEL BARS SHALL NOT BE PLACED WITHIN 3" OF DRAINAGE OPENINGS.
- MAINTAIN 3" CLEARANCE ON ALL FOOTING REINFORCEMENT AND 2" CLEARANCE ON ALL OTHER REINFORCEMENT.
- REFER TO BARRIER MOUNTED LUMINARE SPECIAL DETAILS FOR INFORMATION REGARDING CONDUIT IN CONCRETE BARRIER WALLS. REFER TO ILLUMINATION LAYOUT FOR LOCATIONS OF CONDUIT RUNS.
- BARRIER REINFORCING BARS ANCHORED INTO EXISTING CONCRETE PAVEMENT SHALL BE INSTALLED AND SECURED ACCORDING TO 804.06 USING AN APPROVED ANCHORING SYSTEM FROM OPL.

NOTE: THE COST FOR THE MODIFICATION OF THE BARRIERS AND DROP INLETS ARE TO BE SUBSIDIARY TO CONCRETE BARRIER WALLS AND CURBS.



SECTION A-A CONCRETE BARRIER WALL (SIDE TYPE A)

NOTE: SIDE TYPE A IS FOR USE WITH PROPOSED PAVEMENT.



SECTION A-A CONCRETE BARRIER WALL (SIDE TYPE A-I)

NOTE: SIDE TYPE A-I IS FOR USE WITH EXISTING PAVEMENT.

DATE	REVISION	FILMED
11-07-19	ADDED GENERAL NOTES.	
11-16-17	REVISED CONCRETE BARRIER WALL, RAISED GUARDRAIL HEIGHT 3" AND REVISED POST SPACING, CHANGED STD. DWG. NUMBER FROM GR-II TO GR-13	
07-14-10	RAISED HEIGHT OF W-BEAM 1"	
08-22-02	REV. SECTION A-A OF DETAILS OF CONCRETE BARRIER WALL	
06-29-00	MOVED DIMENSION LINE	
05-18-00	ADDED NOTE	
03-30-00	REVISED TO INCLUDE THRIE BEAM	
06-02-94	ADDED TRANSITION SECTION NOTE	
10-01-92	REDRAWN & REVISED	10-1-92
08-15-91	REVISED DRAWING PLAN CONC. BARR.	8-15-91
02-16-89	ADDED SKEWED DETAILS	594-2-16-89
07-14-88	CHANGED TITLE	
10-09-87	REDRAWN & REVISED	

ARKANSAS STATE HIGHWAY COMMISSION

CONCRETE BARRIER WALL
(PIER PROTECTION TYPE A)

STANDARD DRAWING GR-13