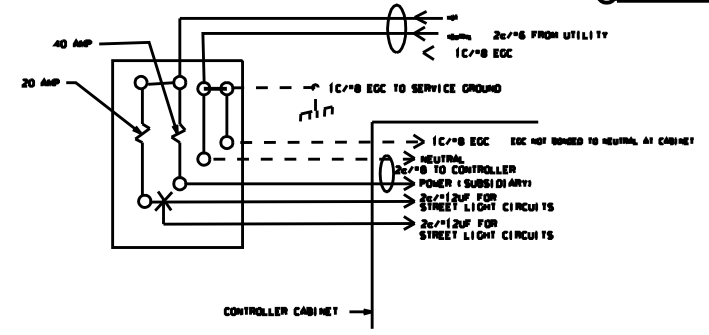
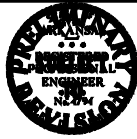


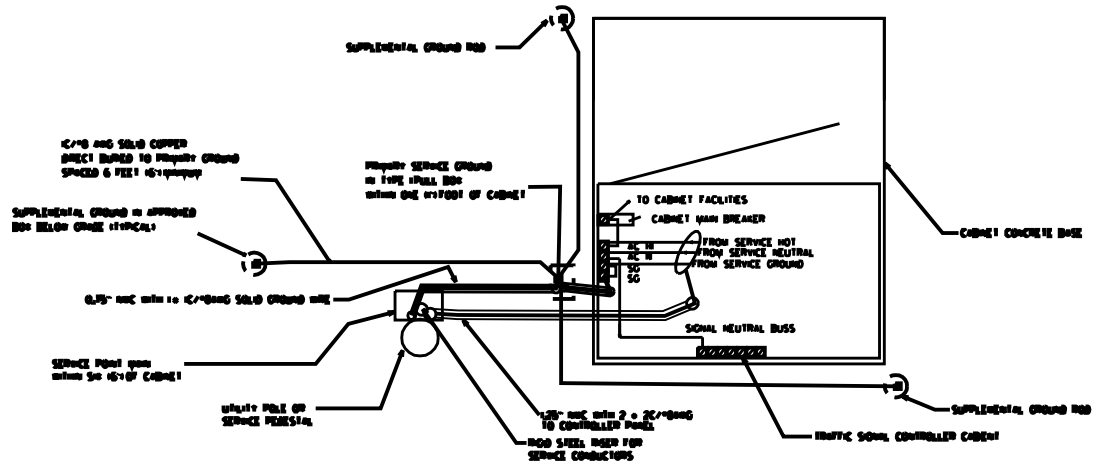
DATE REVISION	DATE REVISION	DATE REVISION	DATE REVISION	DATE REVISION	STATE	PROJECT NUMBER	SHEET NO.	TOTAL SHEETS
					6 ARK.			

8 SIGNALIZATION DETAILS



MAIN BREAKER WIRING (TYPICAL)

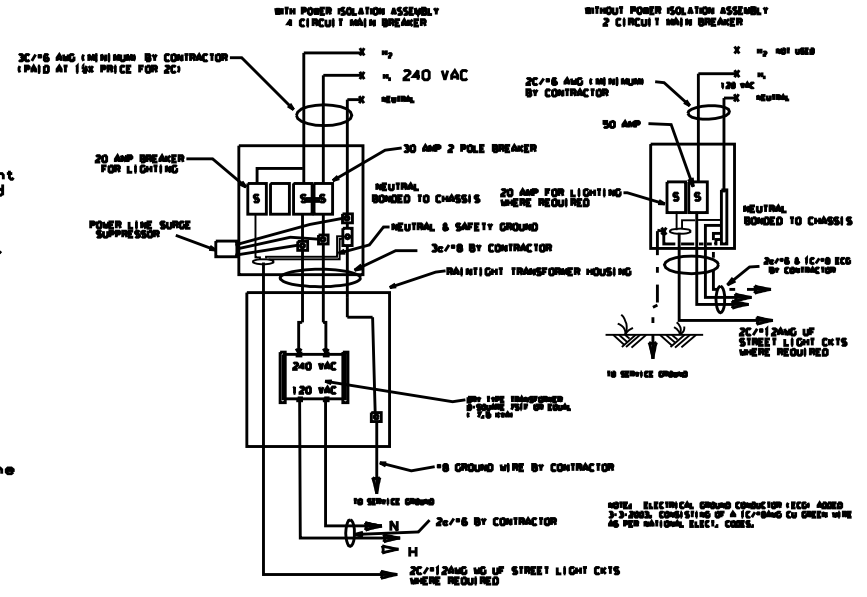
Service Ground is typically tied to neutral at the Main Breaker. As such, controller ground IS NOT tied to Neutral at secondary Breaker or in controller cabinet.



1. Location of Services To meet the requirements for safety and maximize lightning protection, the 'Service Point Main' from the utility primary service point must be within six (6') feet of the traffic signal controller cabinet. Electrical service shall be provided by the City/County to a service pole or pedestal with external reinteright breaker (MAIN BREAKER) at a mutually acceptable point within the right-of-way. Service point includes galvanized steel conduit to a point 18" below ground line, two circuit main breaker, power isolation assembly where required, meter loop if required by local utility, electrical conductors and weatherhead. Where street lighting is included as part of signal installation, street lighting circuit (2c/12 awg UF rated, typical) shall be kept separate from the circuit serving traffic signal. Service wire and wiring from the controller to main breaker is provided by the Contractor as a part of this contract. Wire and wiring from main breaker, and connection to the utility is the responsibility of the City/County.

2. Meter Loops: All components of the service point with the exception of the wire and wiring above the Main Breaker is furnished and installed by the Contractor. Wiring from Main Breaker including connection to the utility, is the responsibility of the City/County. If meter loop is required, meter base and hardware is provided by the City/County and installed by the contractor.

3. Supplemental Ground Rods: Supplemental Ground Rods are fusion welded to 1 C/8AWG, Solid Copper Ground Wire. Attachment to Primary ground may be by an approved clamp. Rods are located in a box approved by the engineer meeting the same loading requirements as Section 711 Concrete Pull Box of the Standard Specification, with the exception to dimensions. Box may be either round or square approximately six (6') inches minimum inside dimensions and six (6') inches depth. (Strongwell PC0608BA06 with PC0608CA00 lid or equal)



DATE	REVISION	DATE FIG.
1-17-08	ISSUED	

ARKANSAS STATE HIGHWAY COMMISSION
SIGNALIZATION DETAIL
(Service Point Installation With Supplemental Grounding Array)

s1c6a2.dgn