



ANNUAL REPORT



ARKANSAS STATE HIGHWAY AND TRANSPORTATION DEPARTMENT

2011



Highway 8, Polk County

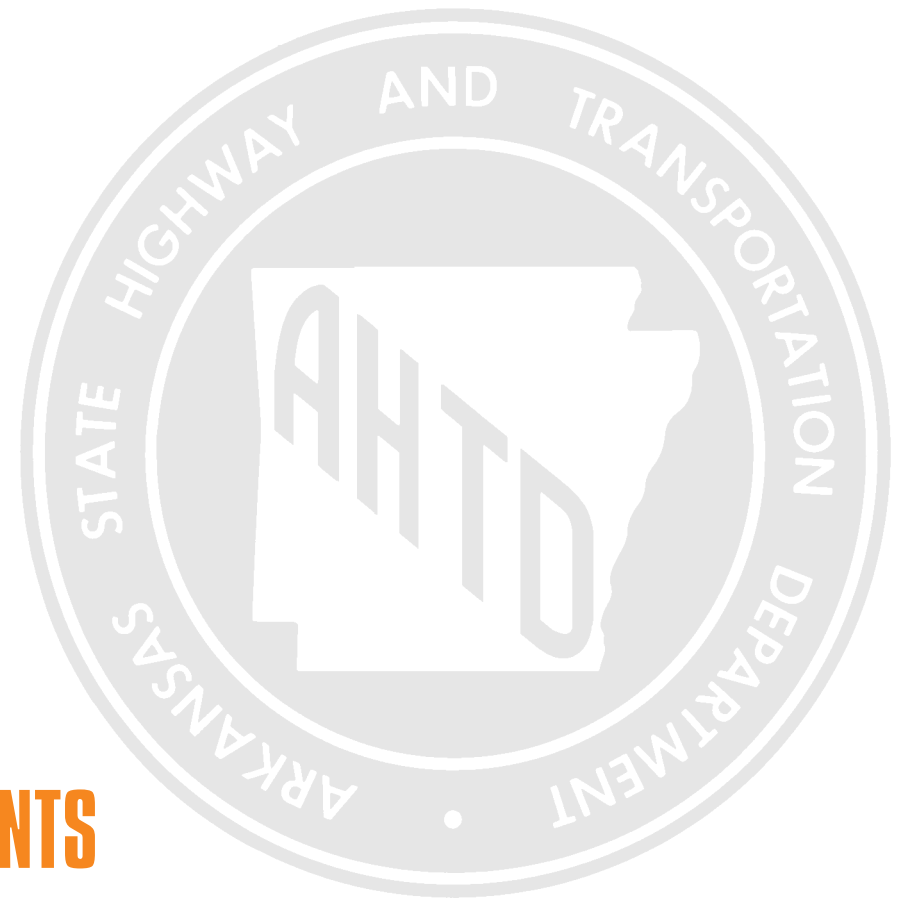


TABLE OF CONTENTS

| | |
|-----------------------------------|---|
| Director's Message | 1 |
| Arkansas State Highway Commission | 2 |
| New Highway Construction | 3 |
| Groundbreakings & Ribbon Cuttings | 4 |
| Recognition & Accomplishments | 5 |
| Public Involvement | 6 |
| AHTD Workforce | 7 |
| Organization | 8 |
| District Information | 9 |



Interstate 540, Washington County

MISSION STATEMENT:
To provide a safe, efficient, aesthetically pleasing and environmentally sound intermodal transportation system for the user.

On the front cover: Construction at the Interstate 430/630 interchange in Little Rock.

DIRECTOR'S MESSAGE



It is an honor to greet you as the new Director of the Arkansas State Highway and Transportation Department. I appreciate the opportunity to follow in the footsteps of former Director Dan Flowers.

The Arkansas State Highway and Transportation Department is proud to present the highlights and successes that the Department experienced over the calendar year 2011.

As the result of the help of many organizations and individuals, Arkansas voters went to the polls in 2011 and gave the Department the opportunity to continue the rehabilitation of our Interstate highways. Seen as a continuation of our successful 1999 Interstate Rehabilitation Program, the new program will allow us to make improvements to over 400 miles of Interstates across Arkansas. Planning has already begun on the new program and the first projects should be awarded to contractors in November of this year.

As 2011 came to a close, the Department had let to contract 223 projects totaling \$547,825,706 for improvements to our highway system, county roads and city streets.

Among those are the first of several projects that will widen Interstate 40 to six lanes between North Little Rock and Conway. In northwest Arkansas, work began on the Bella Vista Bypass. The 19-mile bypass not only will relieve congestion on Highway 71 through Bella Vista but also is a key link in the future Interstate 49 corridor. United States Transportation Secretary Ray LaHood made a visit on site to learn more about this important project. In northeast Arkansas, the first of several projects that will construct a southern bypass of Paragould on Highway 412 got underway. Crews in southeast Arkansas began work on the first of several projects that will construct the southern bypass of Monticello. It is the first highway project in the area that will eventually be a part of Interstate 69. Work also continued on the improvements to the Interstate 430/630 interchange in Little Rock.

The Department received national attention in 2011 for its innovative use of computer software to identify patterns of traffic crashes on the highway system. Intergraph Corporation brought a film crew to the Department to produce a video in order to share our software utilization with other Departments of Transportation across the country.

The successes we share in this report are the result of the hard work and dedication of the members of the Arkansas State Highway Commission and Department staff working across the state.

This report includes details on these accomplishments and many more over the past year.

AHTD Director Scott E. Bennett

2011 ARKANSAS STATE HIGHWAY COMMISSION



COMMISSION CHAIRMAN R. MADISON MURPHY, of El Dorado, was appointed by Governor Mike Huckabee effective January 14, 2003. He began work as a Junior Accountant for Murphy Oil in 1980 and moved up to Junior Auditor and Associate Auditor. In 1982, he moved to London, England, to serve as an Associate Auditor for Murphy Eastern Oil. He later served as the Supply Coordinator for Crude Oil and Products, the Manager of Treasury and Financial Controls and the Manager of Supply, Trading and Refinery Planning. In 1987, Murphy moved to New Orleans to serve as Executive Assistant for the Ocean Drilling and Exploration Company. He returned to El Dorado in 1988 as Vice President of Planning for Murphy Oil and later served as the company's Treasurer, Chief Financial and Administrative Officer, and Chairman of the Board. He is currently a member of the board for Murphy Oil, Deltic Timber Corporation and Bancorp South, Inc., as well as President of the Murphy Foundation. His term will expire in January 2013.



COMMISSION VICE CHAIRMAN JOHN ED REGENOLD, of Armorel, was appointed by Governor Mike Huckabee effective January 26, 2005. He is a longtime business and civic leader in east Arkansas. He is Chairman of the Armorel Planting Company. Former Governor Huckabee previously appointed Regenold to the Arkansas Economic Development Commission. He is also a member of the St. Francis Levee Board and is a Commissioner for the District 17 Drainage District. He is the Chairman of the Mississippi County Hospital System Board and a member of the board of the Arkansas Northeastern College Foundation. His term will expire in January of 2015.



COMMISSIONER JOHN BURKHALTER of Little Rock was appointed by Governor Mike Beebe effective January 14th, 2011. A civil engineering graduate of the University of Arkansas, Burkhalter is president of Burkhalter Technologies, Inc. He is also a managing member of Burkhalter Leasing, LLC.; Burkhalter Property Group, LLC; and Burkhalter Commercial Group, LLC. Burkhalter served most recently as chairman of the Arkansas Economic Development Commission. He also serves on the board of Pathfinder, Inc. He is past Chairman of the Lung Association Gala and the UAMS Gala. He replaced Cliff Hoofman and will serve the remainder of that term which will expire in January of 2017.



COMMISSIONER DICK TRAMMEL, of Rogers, was appointed by Governor Mike Beebe effective January 12, 2009. He currently serves as Executive Vice President, member of the Board of Directors and Board Secretary of Arvest Bank, Rogers. He is past President and current member of the Board of the Rogers-Lowell Chamber of Commerce. He has served on the Rogers-Lowell United Way board and twice served as Drive Chairman. Trammel is a past President of the Rotary Club of Rogers and past Governor of Rotary International District 6110. Trammel is a founding Director, Director Emeritus and past Chairman of the Northwest Arkansas Radiation Therapy Institute (NARTI). He is a charter member, past Chairman and past board member of the Board of Trustees of Northwest Arkansas Community College. His term will expire in January of 2019.



COMMISSIONER TOM SCHUECK of Little Rock was appointed by Governor Mike Beebe effective January 14th, 2011. Schueck has 41 years experience in forming and managing companies that are involved in heavy construction. Among the companies he has founded are Schueck Steel, Custom Metals, Prospect Steel, L-Con Constructors, L-Con Marine Fabricators and Heritage Golf. Schueck currently serves on the Little Rock Municipal Airport Commission. He also serves on the boards of The Nature Conservancy, UAMS Foundation and the Arkansas Industrial Development Foundation. He has previously served on the Arkansas Parks, Recreation and Travel Commission, and the Arkansas Pollution Control and Ecology Commission. His term will expire in January of 2021.

NEW HIGHWAY CONSTRUCTION

The State-administered highway system in Arkansas totals 16,416 miles. Nationally, Arkansas' highway system ranks 12th in mileage and ranks 43rd in total highway user revenues per mile.

For 2011, 223 projects totaling \$547,825,706 million were let to contract for state highways, county roads and city streets. That figure is up from the previous year.

The most expensive project let to contract was located in Prairie County and was a rehabilitation of ten miles of Interstate 40. Below are the top ten projects let to contract during 2011.

TOP TEN CONTRACTS AWARDED IN 2011

| RANK | PROJECT | LOCATION (COUNTY) | AWARD AMOUNT |
|------|--------------------------------|-----------------------------|--------------|
| 1 | Interstate 40 rehabilitation | Prairie | \$56,324,788 |
| 2 | Interstate 40 widening: Conway | Faulkner | \$44,659,164 |
| 3 | Interstate 530 reconstruction | Grant/Jefferson | \$25,984,673 |
| 4 | Highway 412 Bypass, Paragould | Greene | \$21,057,069 |
| 5 | Interstate 69 Connector | Lincoln/Jefferson/Cleveland | \$19,956,869 |
| 6 | Bella Vista Bypass | Benton | \$19,854,030 |
| 7 | Highway 18 widening | Craighead | \$18,984,587 |
| 8 | Highway 82 widening | Chicot | \$15,236,716 |
| 9 | Interstate 69 Connector | Jefferson | \$13,916,735 |
| 10 | Highway 167 widening | Cleveland | \$13,287,404 |

TOTAL AWARD AMOUNTS 2005 - 2011

| YEAR | NUMBER OF JOBS | TOTAL AMOUNT |
|-------|----------------|----------------|
| 2005 | 228 | \$382,804,881 |
| 2006 | 173 | \$377,251,887 |
| 2007 | 202 | \$374,889,601 |
| 2008 | 187 | \$373,741,532 |
| 2009* | 222 | \$498,401,522* |
| 2010* | 230 | \$567,915,542* |
| 2011* | 223 | \$547,825,706* |

(*Totals include projects utilizing \$350 million in one-time funds from the American Recovery & Reinvestment Act of 2009)



⤴ Highway 70/270 Interchange
Garland County



⤴ Highway 5
Pulaski County



⤴ Highway 270
Montgomery County

GROUNDBREAKINGS & RIBBON CUTTINGS

Department staff, along with state and local officials, took part in numerous groundbreakings and ribbon cuttings to officially recognize the start of some new projects and the opening of others across the state in 2011.

Bull Shoals Lake was the scene of the dedication of two new tug boats for the **Peel Ferry** on June 22nd. In traditional champagne bottle style, Commissioner Dick Trammel had the honor of dedicating the new boats. The Peel Ferry is the only ferry still operating in Arkansas. It serves Highway 125 carrying motorists from Peel, Arkansas, across the lake to Protem, Missouri.

On September 16th, AHTD officials and local dignitaries cut the ribbon on an **Interstate 40 frontage road extension** at Mayflower. The new road extends the existing frontage road on the east side of Interstate 40 in the area of Highway 89 and Grassy Lake.

A large crowd gathered on September 27th for a ribbon cutting to open the new **Vilonia Bypass**. The Highway 64 bypass is approximately ten miles in length and takes traffic around the southern side of town.

The first construction contract for Interstate 69 in Arkansas was celebrated on November 9th with a groundbreaking ceremony for the **Monticello Bypass**. The first section of the bypass will be 8.2 miles in length extending from Highway 425 southward to Highway 278 East.

Dedication of a new tug for the Peel Ferry.



Dedication of the Vilonia Bypass.



Monticello Bypass, a section of future Interstate 69.

RECOGNITION & ACCOMPLISHMENTS

The Arkansas State Highway and Transportation Department and its employees were recognized for outstanding work in numerous areas in 2011.

United States Transportation Secretary **Ray LaHood** was in Arkansas on July 8th to see, firsthand, work on the first phase of the Bella Vista Bypass. An event with AHTD staff and local dignitaries spotlighting construction and future plans was held near Hiwassee. LaHood was also briefed on the Razorback Greenway, a 36-mile bicycle and pedestrian corridor linking Bentonville, Rogers, Lowell, Springdale, Johnson and Fayetteville. Both projects LaHood visited utilized federal TIGER grants (Transportation Investment Generating Economic Recovery) provided by the U.S. Department of Transportation.

Arkansas Highway Police **Major Paul Claunch** was appointed to serve on the Motor Carrier Safety Advisory Committee (MCSAC) of the U.S. Department of Transportation's Federal Motor Carrier Safety Administration (FMCSA). The Administration's primary mission is to prevent commercial motor vehicle-related fatalities and injuries. The MCSAC is composed of FMCSA stakeholders from the safety enforcement, industry, labor, and safety sectors and is charged with providing advice and recommendations to the FMCSA Administrator on federal motor carrier safety programs.

David Mayo, Division Head of State Aid, was named Public Works Professional of the Year by the Arkansas Chapter of the American Public Works Association.



(l. to r.) Sandra Otto, FHWA Division Administrator - Arkansas; U. S. Transportation Secretary Ray LaHood and AHTD Director Dan Flowers on site at Bella Vista.

Mike Fugett, Division Head of Roadway Design, was inducted into the Arkansas Academy of Civil Engineering. Members of the Academy are graduates of the Department of Civil Engineering at the University of Arkansas who have distinguished themselves with sustained and outstanding contributions to the civil engineering profession and who are committed to continued support of the Department, faculty and students.

Intergraph Corporation brought a film crew to the Department to produce a video on the Planning and Research Division's innovative use of the I/ Incident analyst software tool. The Division applied the program to identify patterns of crashes on the highway system. The video will be used to show other transportation agencies this innovative use of Intergraph Corporation software.

The Department joined a growing number of Departments of Transportation across the country that are now using the Internet to accept **electronic bids** on construction projects. The process is easier and less costly for both contractors and the Department.



(l. to r.) David Mayo, Division Head of State Aid, receives the "Public Works Professional of the Year" award from Jay Whisker, President of the Arkansas Chapter of the American Public Works Association.



A film crew from Intergraph Corporation with Tim Mahan, Cartographer III, of Planning and Research.

PUBLIC INVOLVEMENT

When planning new roadways across the state, the Department visits local communities throughout the year in order to receive early and ongoing input from citizens in local communities.

Public Involvement meetings are held around the state and are an effective way to share aerial photos of sight locations, design plans and maps for new roadways. It is also an opportunity to receive feedback from citizens and local officials that live in the project area. The meetings allow the Department staff to answer any questions that may arise.

The Department held 28 public meetings across the state in 2011. Over 2,100 people attended in order to exchange information with our staff.

Public meetings were held in Batesville, Bee Branch, Bentonville, Black Rock, Centerville, Clinton, Conway, Crossett, Dover, El Dorado, Green Forest, Little Rock, Mammoth Springs, Marianna, Mountain View, Norfolk, Ola, Paragould, Rogers, Russellville, Searcy, Springdale and Texarkana.

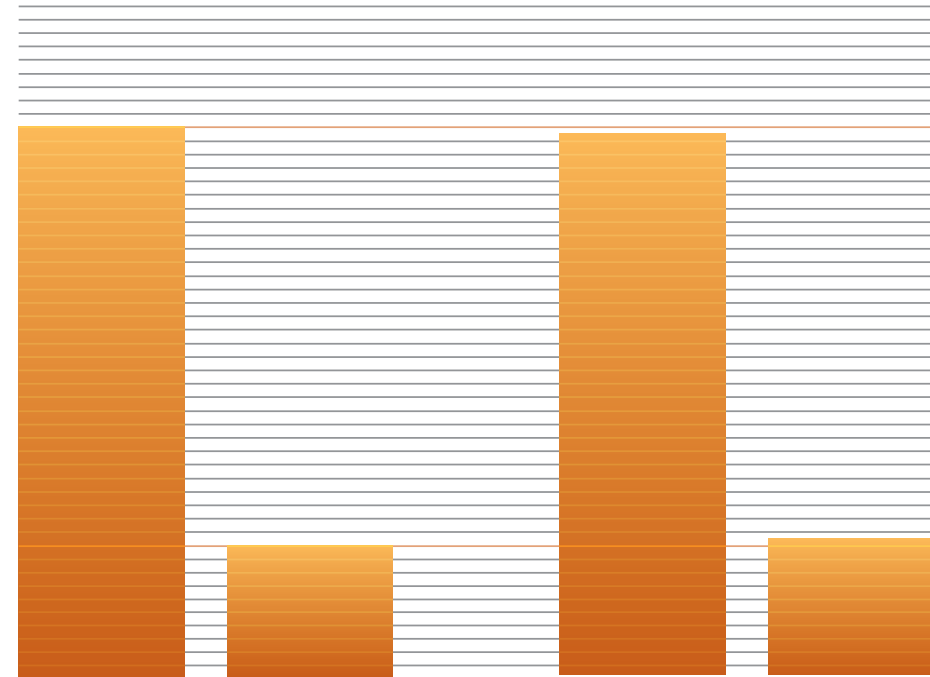


Photos on this page are from public meetings held in Black Rock, Little Rock and Mountain View.

AHTD WORKFORCE

With the end of the year 2011, the Arkansas State Highway and Transportation Department workforce totaled 3,602 full-time, regular employees. That is a decrease of 61 employees compared to the end of 2010.

For 2011, there were 2,889 males (80%) and 713 females (20%), with 2,857 non-minorities (79%) and 745 minorities (21%). Since 2006, the representation of minorities in the Department has increased slightly.



MALES - 80%
FEMALES - 20%

NON-MINORITIES - 79%
MINORITY - 21%



⤴ Interstate 40, Johnson County



⤴ Arkansas Highway Police Corporal David Stovall.



⤴ AHTD staff greet the public at the Arkansas State Fair in Little Rock.

ORGANIZATION

The Arkansas Highway Commission and the Arkansas State Highway and Transportation Department have enjoyed nearly 60 years of progress under the structure envisioned by two State Senators, Y.M. Mack and Lawrence Blackwell.

Together, they wrote Amendment 42 to the Arkansas Constitution. This landmark amendment, commonly known as the Mack-Blackwell Amendment, was implemented in 1953 and provides that each of the five Arkansas Highway

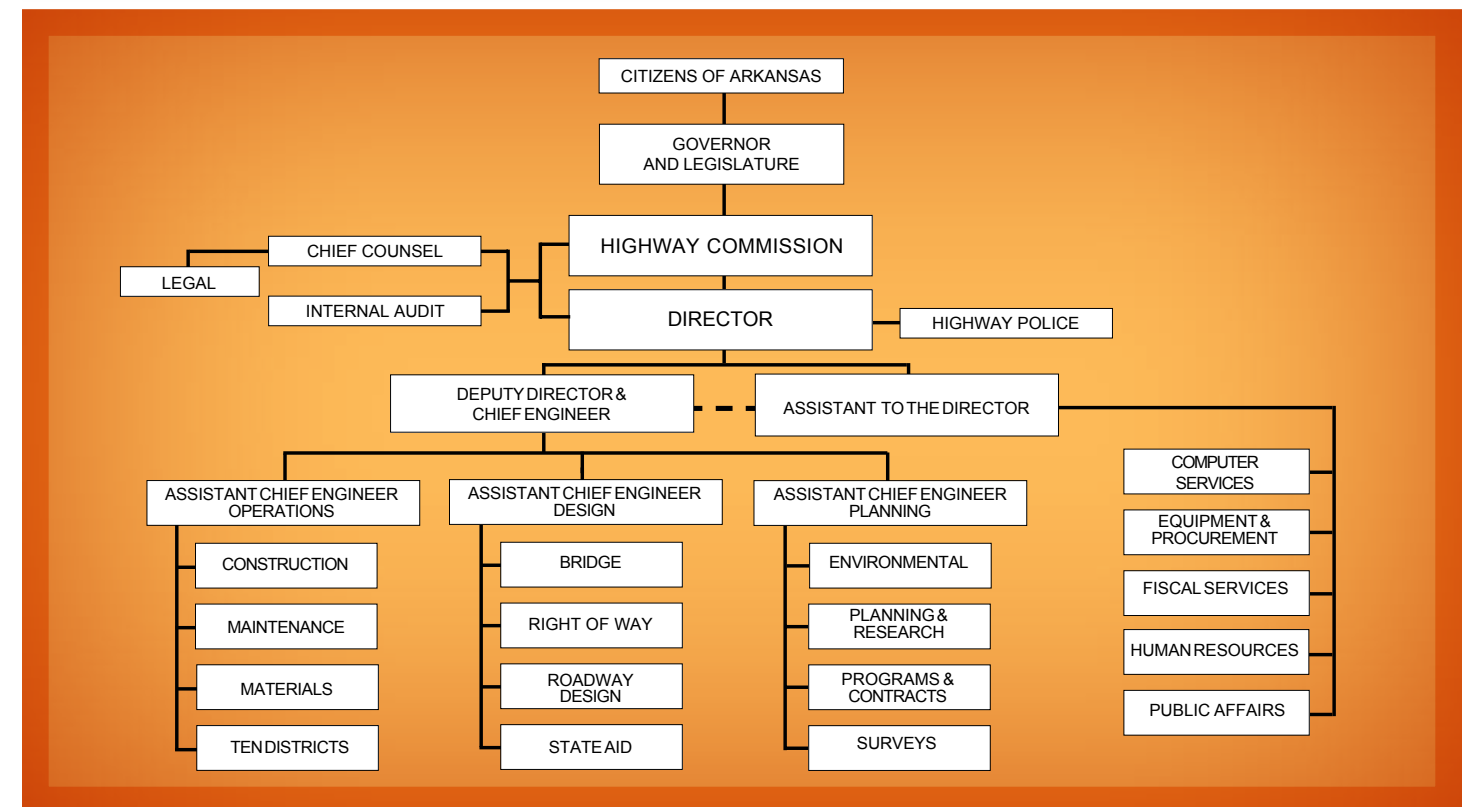
Commissioners serves a ten-year staggered term, with a new commissioner being appointed by the Governor every two years.


The Commission is assigned all powers necessary to fully and effectively administer Arkansas laws and regulations relating to AHTD operations.

The Department Director is appointed by the Commission and is responsible not only for developing a professional staff, but also overseeing construction and maintenance on the 16,416 mile highway system.



(l. to r.) Ralph Hall, Assistant to the Director; Frank Vozel, Deputy Director and Chief Engineer; Emanuel Banks, Assistant Chief Engineer for Operations; Scott Bennett, Director; Phil McConnell, Assistant Chief Engineer for Design; Lorie Tudor, Assistant Chief Engineer for Planning.





DISTRICT INFORMATION

DISTRICT 1

Engineer: Ray Woodruff
 2701 Highway 64, P.O. Box 278, Wynne, Arkansas 72396-0278
 Telephone: (870) 238-8144 Fax: (870) 238-2994
 Email: ray.woodruff@arkansashighways.com

COUNTIES: CRITTENDEN, CROSS, LEE, MONROE, PHILLIPS, ST. FRANCIS AND WOODRUFF



DISTRICT 2

Engineer: David Henning
 4900 Highway 65 South, P.O. Box 6836, Pine Bluff, Arkansas 71611-6836
 Telephone: (870) 534-1612 Fax: (870) 534-2038
 Email: david.henning@arkansashighways.com

COUNTIES: ARKANSAS, ASHLEY, CHICOT, DESHA, DREW, GRANT, JEFFERSON AND LINCOLN



DISTRICT 3

Engineer: Don Donaldson
 2911 Highway 29 North, P.O. Box 490, Hope, Arkansas 71802-0490
 Telephone: (870) 777-3457 Fax: (870) 777-3489
 Email: don.donaldson@arkansashighways.com


COUNTIES: HEMPSTEAD, HOWARD, LAFAYETTE, LITTLE RIVER, MILLER, NEVADA, PIKE AND SEVIER



DISTRICT 4

Engineer: Joe Shipman
 4019 Towson Avenue, P.O. Box 1424, Fort Smith, Arkansas 72902-1424
 Telephone: (479) 646-5501 Fax: (479) 646-8286
 Email: joe.shipman@arkansashighways.com

COUNTIES: CRAWFORD, FRANKLIN, LOGAN, POLK, SCOTT, SEBASTIAN AND WASHINGTON

DISTRICT INFORMATION

DISTRICT 5

Engineer: Lyndal Waits
 1673 Batesville Boulevard, P.O. Box 2376, Batesville, Arkansas 72503-2376
 Telephone: (870) 251-2374 Fax: (870) 251-2393
 Email: lyndal.waits@arkansashighways.com

COUNTIES: CLEBURNE, FULTON, INDEPENDENCE, IZARD, JACKSON, SHARP, STONE AND WHITE



DISTRICT 6

Engineer: Joe Sartini
 8900 Mabelvale Pike, P.O. Box 190296, Little Rock, Arkansas 72219-0296
 Telephone: (501) 569-2266 Fax: (501) 569-2366
 Email: joe.sartini@arkansashighways.com

COUNTIES: GARLAND, HOT SPRING, LONOKE, PRAIRIE, PULASKI AND SALINE



DISTRICT 7

Engineer: Carl Bachelor
 2245 California Avenue, P.O. Box 897, Camden, Arkansas 71711-0897
 Telephone: (870) 836-6401 Fax: (870) 836-4864
 Email: carl.bachelor@arkansashighways.com

COUNTIES: BRADLEY, CALHOUN, CLARK, CLEVELAND, COLUMBIA, DALLAS, OUACHITA AND UNION



DISTRICT 8

Engineer: Scott Mullis
 372 Aspen Lane, P.O. Box 70, Russellville, Arkansas 72811-0070
 Telephone: (479) 968-2286 Fax: (479) 968-4006
 Email: scott.mullis@arkansashighways.com

COUNTIES: CONWAY, FAULKNER, JOHNSON, MONTGOMERY, PERRY, POPE, VAN BUREN AND YELL



DISTRICT INFORMATION

DISTRICT 9

Engineer: Steve Lawrence
 4590 Highway 65, P.O. Box 610, Harrison, Arkansas 72602-0610
 Telephone: (870) 743-2100 Fax: (870) 743-4630
 Email: steve.lawrence@arkansashighways.com

COUNTIES: BAXTER, BENTON, BOONE, CARROLL, MADISON, MARION, NEWTON AND SEARCY



DISTRICT 10

Engineer: Walter McMillan
 2510 Highway 412 West, P.O. Box 98, Paragould, Arkansas 72451-0098
 Telephone: (870) 239-9511 Fax: (870) 236-1156
 Email: walter.mcmillan@arkansashighways.com

COUNTIES: CLAY, CRAIGHEAD, GREENE, LAWRENCE, MISSISSIPPI, POINSETT AND RANDOLPH



Highway 65, Searcy County



CENTRAL OFFICE

10324 Interstate 30, P.O. Box 2261, Little Rock, Arkansas 72203-2261
 Telephone: (501) 569-2000



MATERIALS LAB

11301 West Baseline Road
 Little Rock, AR 72209
 Telephone: (501) 569-2185



EQUIPMENT & PROCUREMENT

11302 West Baseline Road
 Little Rock, AR 72209
 Telephone: (501) 569-2667



MAINTENANCE

11300 West Baseline Road
 Little Rock, AR 72209
 Telephone: (501) 569-2231



Highway 14, Buffalo River Bridge



2011 ANNUAL REPORT
ARKANSAS STATE HIGHWAY AND TRANSPORTATION DEPARTMENT



www.arkansashighways.com