

**ARKANSAS STATE HIGHWAY AND TRANSPORTATION DEPARTMENT
EQUIPMENT AND PROCUREMENT DIVISION
BID INVITATION**

Bid Number: M-10-032P

BID OPENING LOCATION:
AHTD Equipment and
Procurement Division
11302 West Baseline Road
Little Rock, AR 72209

MAIL TO:
AHTD Equipment and
Procurement Division
P.O. Box 2261
Little Rock, AR 72203

DELIVER TO:
AHTD Equipment and
Procurement Division
11302 West Baseline Road
Little Rock, AR 72209

Bid Opening Date: November 3, 2009 Time: 11:00 a.m.

Sealed bids for furnishing the commodities and/or services described below, subject to the Conditions on page 2 of this Bid Invitation will be received at the above-noted mail and delivery locations until the above-noted bid opening date and time, and then publicly opened at the above-noted bid opening location. **Bids must be submitted on this form, with attachments when appropriate, or bids will be rejected. Late bids and unsigned bids will not be considered.**

In compliance with this Bid Invitation and subject to all the Conditions thereof, the undersigned offers and agrees to furnish any and all items upon which prices are quoted, at the price set opposite each item.

Company Name: _____

Name (Type or Print): _____

Address: _____

Title: _____

Phone: _____ Fax: _____

City: _____ State: _____ Zip: _____

E-mail Address: _____

Federal Tax ID or Social Security No.: _____

Signature: _____

Signature must be legible, original (not photocopied) and in ink.
Unsigned bids will be rejected.

Item No.	Description	Quantity	Unit	Unit Price	Amount
1.	<p>Furnish and Install New Chain Link Fence and Gates (including removal and disposal of existing fence) as per complete listing on Page 4 of this Bid Invitation.</p> <p>FOB: AHTD – St Francis County Area Headquarters, Hwy. 70, 2 miles West of Forrest City, Arkansas</p> <p>Contact for Technical Information: Rex Vines, District Maintenance Engineer (870-238-8144) Contacts for Bidding Information: Danny Keene (501-569-2674) or Chicita Pate (501-569-2675)</p> <p>Material furnished and Construction Methods must meet the requirements of Section 619, of Arkansas State Highway and Transportation Department Standard Specifications for Highway Construction, Edition of 2003 and also AHTD Drawing CL-1 and Plot Plans attached to and made a part of this bid. (Standard Specifications are accessible on our web site at www.arkansashighways.com.)</p> <p>Bid price shall include all labor, materials, and equipment necessary to perform the work as specified, and shall further include all licenses, fees, permits, royalties, and <u>all taxes</u>. Bid price shall represent full compensation for completion of the work. This provision supersedes Condition 4 on page 2 of this Bid Invitation. Payment will be made in accordance with Arkansas State Highway & Transportation Department Standard Specifications and Applicable Special Provisions.</p> <p>Bid Bond in the amount of 5% of total bid price required of all bidders at time of bid opening or bid will be rejected. Personal and company checks are not acceptable as Bid Bonds. See Condition 3 on page 2 of this Bid Invitation. Performance Bond only (no checks of any kind allowed) in the amount of 100% of total bid price will be required of successful bidder prior to providing goods/services. See Condition 3 on page 2 of this Bid Invitation.</p> <p>The successful bidder will be required to complete job within 90 days after award.</p> <p>Bids and Specifications are available on-line by going to the AHTD Web Site – www.arkansashighways.com and clicking on “Commodities and Services Bids/Contracts Information”. Tabulations will also be available at this site within 72 hours after bid opening. If you have any questions, call this office at 501-569-2667.</p>				
(31-0463) 25-04				TOTAL BID	

STANDARD BID CONDITIONS

M-10-032P

1. **ACCEPTANCE AND REJECTION:** The Arkansas State Highway and Transportation Department (AHTD) reserves the right to reject any or all bids, to accept bids in whole or in part (unless otherwise indicated by bidder), to waive any informalities in bids received, to accept bids on materials or equipment with variations from specifications where efficiency of operation will not be impaired, and to award bids to best serve the interest of the State.
2. **PRICES:** Unless otherwise stated in the Bid Invitation, the following will apply: (1) unit prices shall be bid, (2) prices should be stated in units of quantity specified (feet, each, lbs., etc.), (3) prices must be F.O.B. destination specified in bid, (4) prices must be firm and not subject to escalation, (5) bid must be firm for acceptance for 30 days from bid opening date. In case of errors in extension, unit prices shall govern. Discounts from bid price will not be considered in making awards.
3. **BID BONDS AND PERFORMANCE BONDS:** If required, a **Bid Bond** in the form of a cashier's check, certified check, or surety bond issued by a surety company, in an amount stated in the Bid Invitation, must accompany bid. **Personal and company checks are not acceptable as Bid Bonds.** Failure to submit a Bid Bond as required will cause a bid to be rejected. The Bid Bond will be forfeited as liquidated damages if the successful bidder fails to provide a required Performance Bond within the period stipulated by AHTD or fails to honor their bid. Cashier's checks and certified checks submitted as Bid Bonds will be returned to unsuccessful bidders; surety bonds will be retained. The successful bidder will be required to furnish a **Performance Bond** in an amount stated in the Bid Invitation and in the form of a cashier's check, certified check, or surety bond issued by a surety company, unless otherwise stated in the Bid Invitation, as a guarantee of delivery of goods/services in accordance with the specifications and within the time established in the bid. **Personal and company checks are not acceptable as Performance Bonds.** In some cases, a cashier's check or certified check submitted as a Bid Bond will be held as the Performance Bond of the successful bidder. Cashier's checks or certified checks submitted as Performance Bonds will be refunded shortly after payment has been made to the successful bidder for completion of all terms of the bid; surety bonds will be retained. Surety bonds must be issued by a surety company authorized to do business in Arkansas, and must be signed by a Resident Local Agent licensed by the Arkansas State Insurance Commissioner to represent that surety company. Resident Agent's Power-of-Attorney must accompany the surety bond. Certain bids involving labor will require Performance Bonds in the form of surety bonds only (no checks of any kind allowed). In such cases, the company issuing the surety bond must comply with all stipulations herein and must be named in the U. S. Treasury listing of companies holding Certificates of Authority as acceptable sureties on Federal Bonds and as acceptable reinsuring companies. Any excess between the face amount of the bond and the underwriting limitation of the bonding company shall be protected by reinsurance provided by an acceptable reinsuring company. Annual Bid and Performance Bonds on file with E & P Division must have sufficient unencumbered funds to meet current bonding requirements, or the bid will be rejected, unless the balance is submitted as set forth above, prior to bid opening.
4. **TAXES:** The AHTD is not exempt from Arkansas State Sales and Use Taxes, or local option city/county sales taxes, when applicable, and bidders are responsible to the State Revenue Department for such taxes. These taxes should not be included in bid prices, but where required by law, will be paid by the AHTD as an addition thereto, and should be added to the billing to the AHTD. The AHTD is exempt from Federal Excise Taxes on all commodities except motor fuels; and excise taxes should not be included in bid prices except for motor fuels. Where applicable, tax exemption certificates will be furnished by the AHTD.
5. **"ALL OR NONE" BIDS:** Bidders who wish to bid "All or None" on two or more items shall so stipulate on the face of bid sheet; otherwise, bid may be awarded on an individual item basis.
6. **SPECIFICATIONS:** Complete specifications should be attached for any substitution or alternate offered, or where amplification is necessary. Bidder's name must be placed on all attachments to the bid.
7. **EXCEPTIONS TO SPECIFICATIONS:** Any exceptions to the bid specifications must be stated in the bid. Any exceptions to manufacturer's published literature must be stated in the bid, or it will be assumed that bidder is bidding exactly as stated in the literature.
8. **BRAND NAME REFERENCES:** All brand name references in bid specifications refer to that commodity or its equivalent, unless otherwise stated in Bid Invitation. Bidder should state brand or trade name of item being bid, if such name exists.
9. **FREIGHT:** All freight charges should be included in bid price. Any change in common carrier rates authorized by the Interstate Commerce Commission will be adjusted if such change occurs after the bid opening date. Receipted common carrier bills that reflect ICC authorized rate changes must be furnished.
10. **SAMPLES, LITERATURE, DEMONSTRATIONS:** Samples and technical literature must be provided free of any charge within 14 days of AHTD request, and free demonstrations within 30 days, unless AHTD extends time. Failure to provide as requested within this period may cause bid to be rejected. Samples, literature and demonstrations must be substantially the same as the item(s) being bid, unless otherwise agreed to by AHTD. Samples that are not destroyed will be returned upon request at bidders expense. Samples from successful bidders may be retained for comparison with items actually furnished.
11. **GUARANTY:** Unless otherwise indicated in Bid Invitation, it is understood and agreed that any item offered or shipped on this bid shall be newly manufactured, latest model and design, and in first class condition; and that all containers shall be new, suitable for storage or shipment and in compliance with all applicable laws relating to construction, packaging, labeling and registration.
12. **BACKORDERS OR DELAY IN DELIVERY:** Backorders or failure to deliver within the time required may constitute default. Vendor must give written notice to the AHTD, as soon as possible, of the reason for any delay and the expected delivery date. The AHTD has the right to extend delivery if reasons appear valid. If reason or delivery date is not acceptable, vendor is in default.
13. **DEFAULT:** All commodities furnished will be subject to inspection and acceptance by AHTD after delivery. Default in promised delivery or failure to meet specifications authorizes the AHTD to cancel award or any portion of same, to reasonably purchase commodities or services elsewhere and to charge full increase, if any, in cost and handling to defaulting vendor. Applicable bonds may be forfeited.
14. **ETHICS:** *"It shall be a breach of ethical standards for a person to be retained, or to retain a person, to solicit or secure a State contract upon an agreement of understanding for a commission, percentage, brokerage, or contingent fee, except for retention of bona fide employees or bona fide established commercial selling agencies maintained by the contractor for the purpose of securing business."* (Arkansas Code, Annotated, Section 19-11-708).

ARKANSAS STATE HIGHWAY AND TRANSPORTATION DEPARTMENT

NOTICE OF NONDISCRIMINATION

The Arkansas State Highway and Transportation (Department) complies with the Americans with Disabilities Act of 1990, Section 504 of the Rehabilitation Act of 1973, Title VI of the Civil Rights Act of 1964 and other federal equal opportunity laws and therefore does not discriminate on the basis of race, sex, color, age, national origin, religion or disability, in admission or access to and treatment in Department programs and activities, as well as the Department's hiring or employment practices. Complaints of alleged discrimination and inquiries regarding the Department's nondiscrimination policies may be directed to James B. Moore, Jr., Section Head - EEO/DBE (ADA/504/Title VI Coordinator), P. O. Box 2261, Little Rock, AR 72203, (501) 569-2298, (Voice/TTY 711), or the following email address: james.moore@arkansashighways.com.

This notice is available from the ADA/504/Title VI Coordinator in large print, on audiotape and in Braille.

ARKANSAS STATE HIGHWAY & TRANSPORTATION DEPARTMENT
 LITTLE ROCK, ARKANSAS
 EQUIPMENT & PROCUREMENT DIVISION

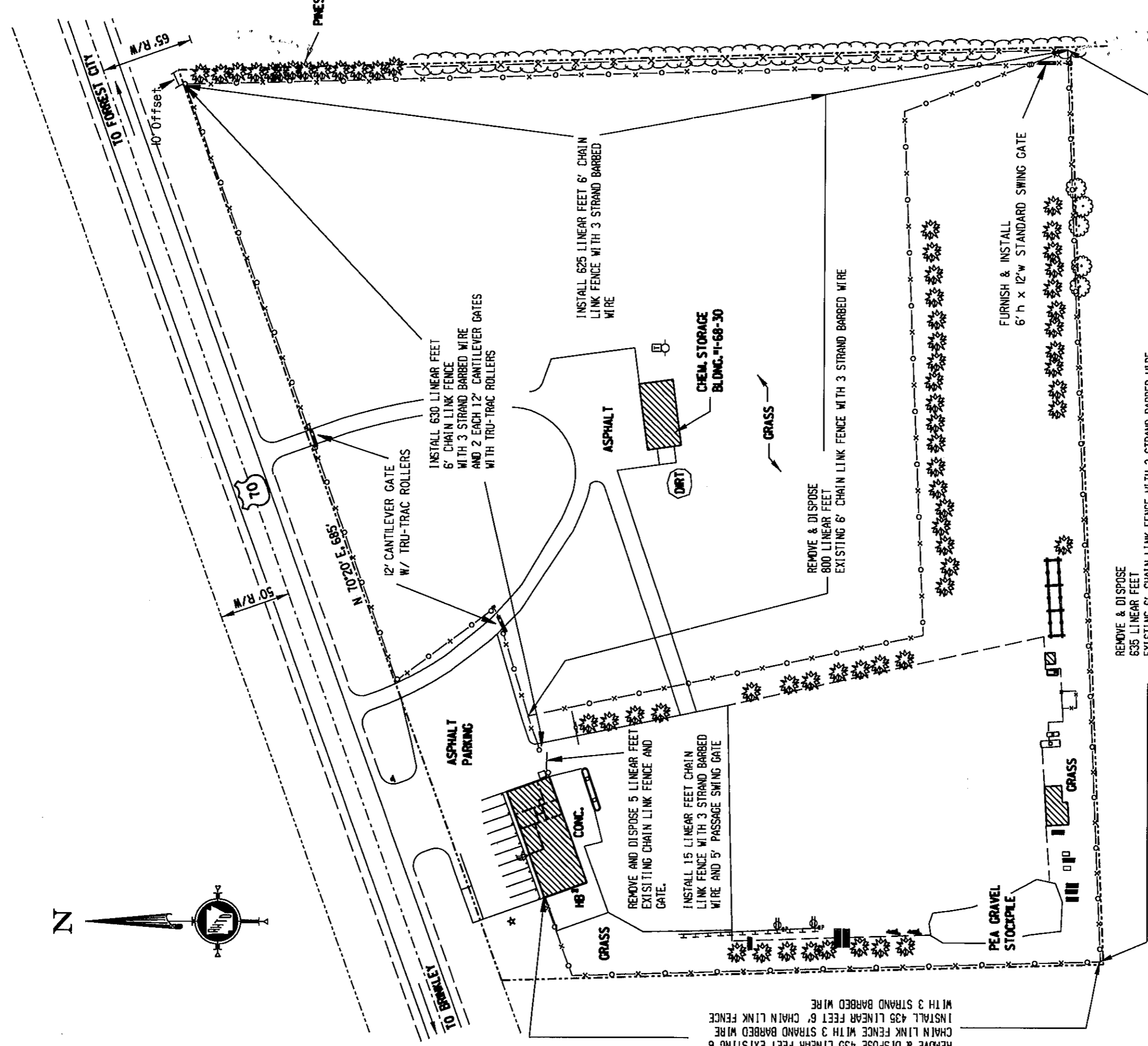
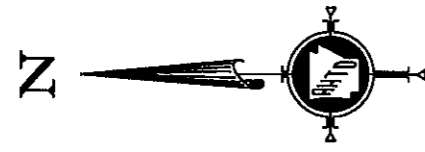
Bid No. M-10-032P

BIDDER: _____

ITEM NO.	DESCRIPTION	QUANTITY	UNIT	PRICE	AMOUNT
1.	Removal and Disposal of Existing Fence	1,910	L.F.	\$ _____	\$ _____
2.	Furnish and Install 6' Steel Chain Link Fence with 3 Strand Barbed Wire	2,340	L.F.	\$ _____	\$ _____
3.	Furnish and Install 12' Steel Cantilever Rolling Gate with Tru-Track Roller	2	ea.	\$ _____	\$ _____
4.	Furnish and Install 5' Steel Passage Swing Gate	1	ea.	\$ _____	\$ _____
5.	Furnish and Install 12' Swing Gate	1	ea.	\$ _____	\$ _____

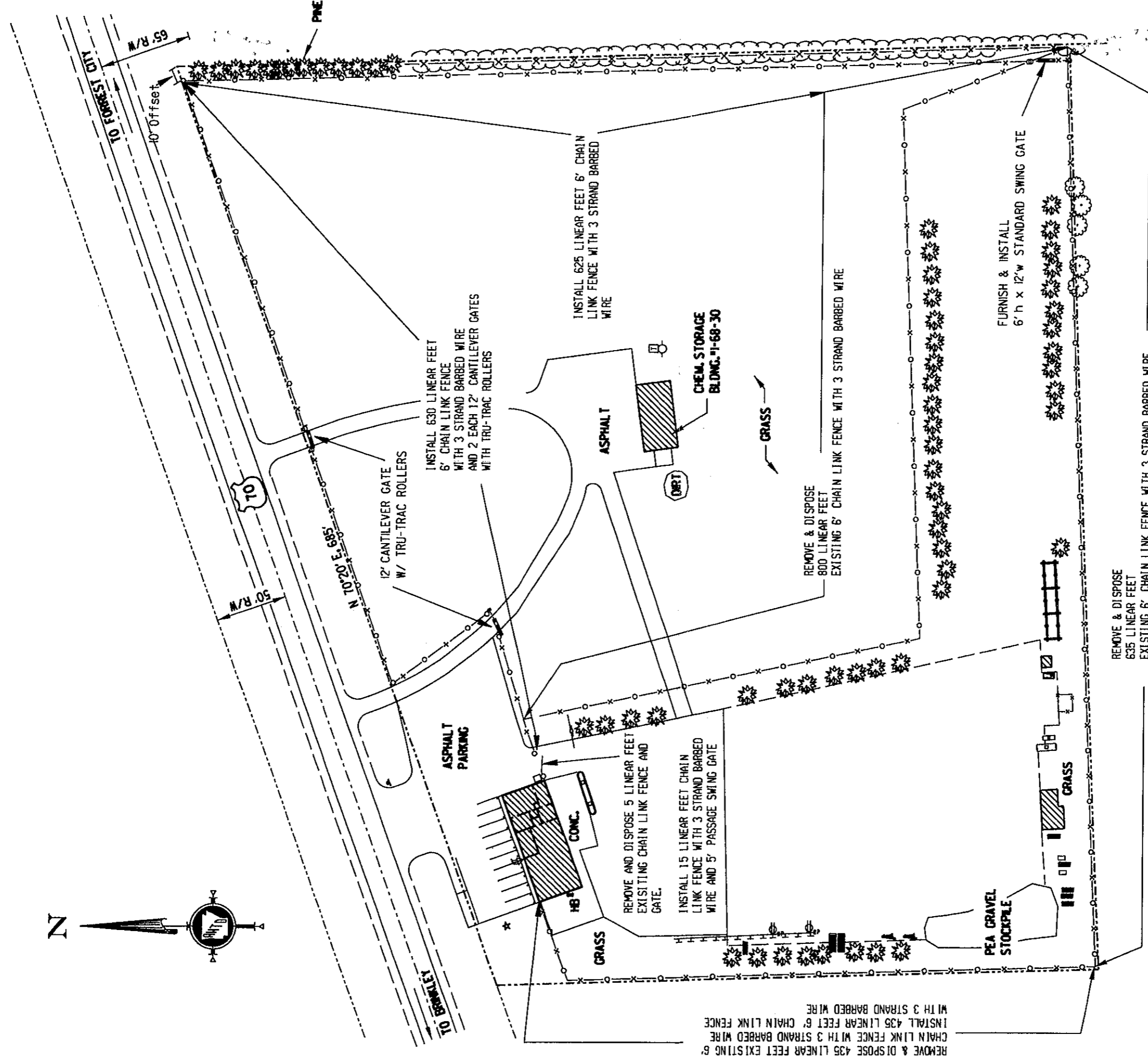
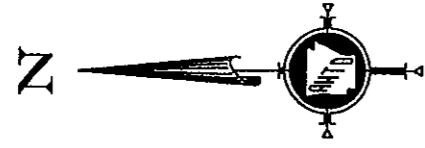
LUMP SUM _____

Items must be priced individually but bid will be awarded by the Lump Sum.



PLOT PLAN (7.8 ± ACRES)
 SCALE: 1" = 100'-0"

**ST. FRANCIS COUNTY
 AREA HEADQUARTERS**
FORREST CITY, ARKANSAS
 ST. FRANCIS COUNTY, DISTRICT #1
 ORIGINAL CONSTRUCTION DATE: 07-1961
 PLAN UPDATED: 12-08-04



PLOT PLAN (7.8 ± ACRES)

SCALE: 1" = 100'-0"

**ST. FRANCIS COUNTY
AREA HEADQUARTERS**

FORREST CITY, ARKANSAS

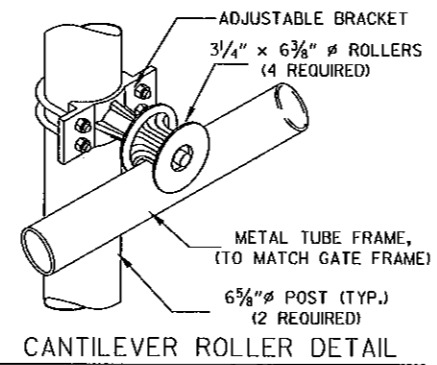
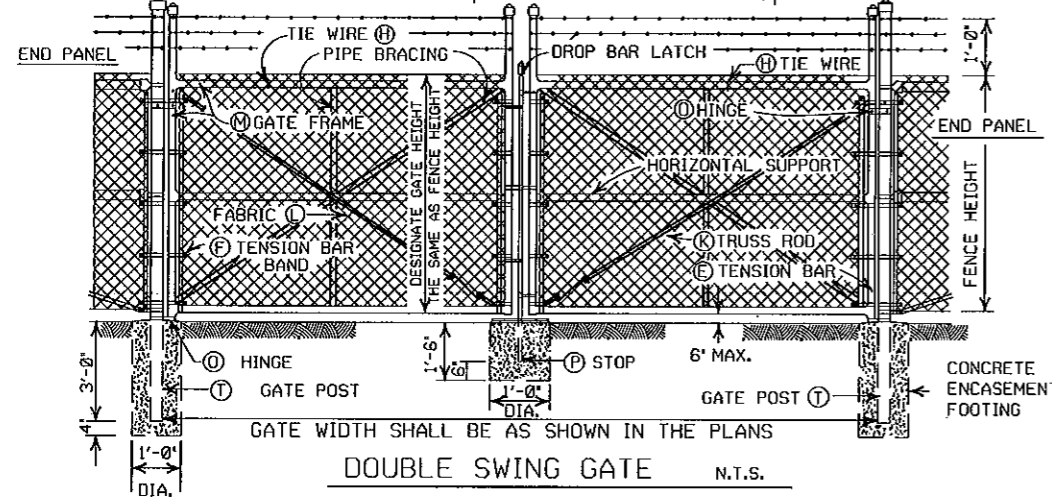
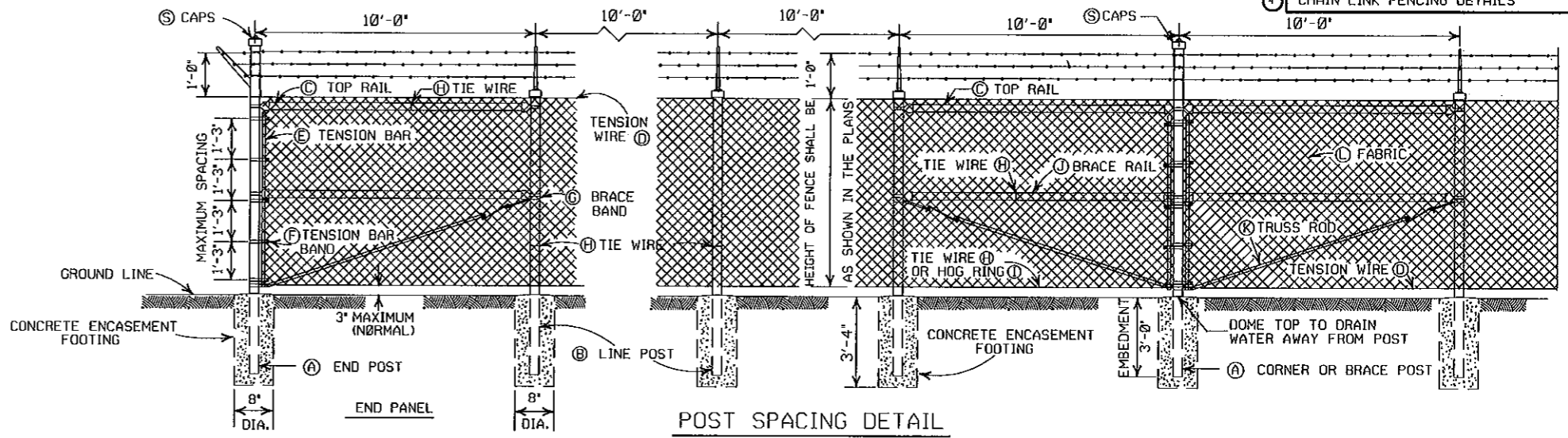
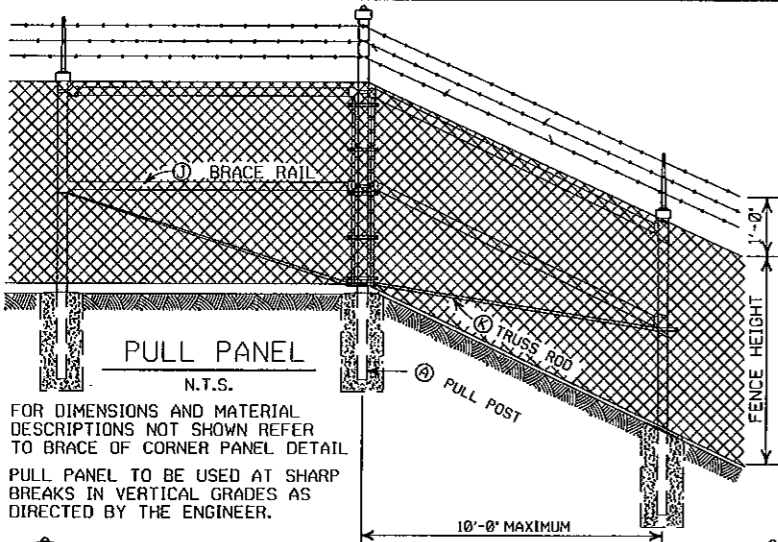
ST. FRANCIS COUNTY, DISTRICT #1

ORIGINAL CONSTRUCTION PLAN UPDATED :

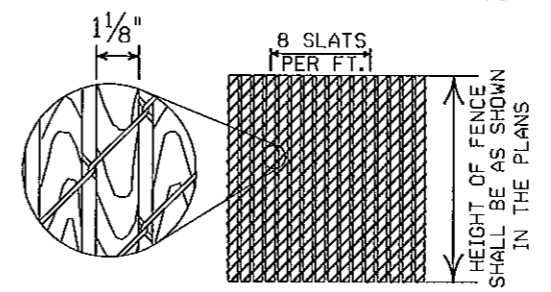
DATE : 07-1961

12-08-04

DATE REVISED	DATE FILMED	DATE REVISED	DATE FILMED	FED. ROAD DIST. NO.	STATE	FED. AID PROJ. NO.	SHEET NO.	TOTAL SHEETS
				6	ARK.			
				JOB NO.				



NOTE: THREE STRANDS OF 12 1/2 GAUGE BARBED WIRE, ABOVE TOP RAIL & TENSION WIRE, ARE TO BE INCLUDED ON ALL CHAIN LINK FENCE & GATES IN THIS PROJECT. BARBED WIRE SHALL CONFORM TO ASTM A 121, CLASS 3 GALV., 4 POINT BARBS ON 5' TO 6' CENTERS.



- GENERAL NOTES:**
- (D) TENSION WIRE: SHALL BE SECURED TO ALL TERMINAL, PULL, BRACE OR CORNER POSTS WITH TENSION BAR BANDS.
 - (J) BRACE RAIL: BRACE RAILS SHALL BE PROVIDED AT ALL TERMINAL, PULL, BRACE OR CORNER POSTS HALFWAY BETWEEN THE TOP RAIL AND GROUND LEVEL WHEN TOPRAIL IS SPECIFIED AND TWELVE INCHES (12") DOWN FROM TOP OF FABRIC WHEN TOP TENSION WIRE IS SPECIFIED. BRACE RAIL SHALL EXTEND FROM SUCH POST TO THE FIRST ADJACENT LINE POST.
 - (L) FABRIC: SHALL CONFORM TO REQUIREMENT OF AASHTO M181, TYPE I, CLASS D; TYPE II; OR TYPE III
 - (M) GATE FRAMES: SHALL BE CONSTRUCTED OF TUBULAR MEMBERS ASSEMBLED BY USE OF HEAVY PRESSED STEEL, MALLEABLE FITTINGS OR BY WELDING. ALL GATES SHALL HAVE ONE HORIZONTAL SUPPORT EXTENDING THE WIDTH OF THE GATE AT THE MIDPOINTS OF VERTICAL FRAME MEMBERS. THE COMPLETE FRAME SHALL BE RIGID AND HAVE AMPLE STRENGTH TO BE FREE FROM SAG AND TWIST.
 - (O) HINGES: SHALL BE OF HEAVY PATTERN, OF ADEQUATE STRENGTH FOR GATE, AND WITH LARGE BEARING SURFACES FOR CLAMPING IN POSITION. THE HINGE SHALL BE OF THE PROPER TYPE TO ALLOW FOR THE DESIGNATED DEGREE OF SWING. THE HINGE SHALL NOT TWIST OR TURN UNDER THE ACTION OF THE GATE. THE GATES SHALL BE CAPABLE OF BEING OPENED AND CLOSED EASILY BY ONE PERSON.
 - (P) LATCHES AND STOPS: SHALL BE PROVIDED FOR ALL GATES. GATES SHALL HAVE A DROP BAR LATCH. LATCHES SHALL BE ARRANGED FOR LOCKING. THE STOP FOR DROP BAR LATCHES SHALL BE SET IN CONCRETE AND ENGAGE THE PLUNGER OF THE BAR LATCH.
 - (S) CAPS: ALL POSTS, EXCEPT ROLL FORMED POSTS AND "T" POSTS SHALL BE CAPPED OVER THE EXTERIOR OF THE POST, AND SHALL CONFORM TO ASTM F626-84.
- CONCRETE REQUIRED FOR THE EMBEDMENT OF ALL POSTS SHALL NOT BE PAID FOR DIRECTLY BUT SHALL BE INCLUDED IN THE CONTRACT UNIT PRICE BID FOR CHAIN LINK FENCE.
- POSTS SHALL BE SPACED EQUIDISTANT ON A MAXIMUM OF 10' CENTERS.
- EXCAVATION FOR POSTS: IN OTHER THAN ROCK SHALL BE OF THE DIMENSIONS INDICATED. IF ROCK IS ENCOUNTERED BEFORE REACHING THE REQUIRED DEPTH, THE EXCAVATION SHALL BE CONTINUED TO THE DEPTH INDICATED OR 1'-6" INTO THE ROCK, WHICHEVER IS LESS, AND SHALL BE A MINIMUM OF 8 INCHES IN DIAMETER.

NOTES: 1. ALL GATES ARE TO HAVE BARBED WIRE ABOVE TOP RAIL AS PER FENCE.
2. ALL GATES OVER 8' IN LENGTH ARE TO HAVE 1 1/2" O.D. PIPE BRACING AS SHOWN IN LIEU OF TRUSS ROD BRACING.

REQUIRED O.D. IN INCHES	GRADE 1 AND ALUMINUM ALLOY				GRADE 2 AND ALTERNATES			
	O.D. • INCHES	MINIMUM WALL THICKNESS	LBS. PER LINEAR FT. • STEEL	LBS. PER LINEAR FT. • ALUMINUM	O.D. • INCHES	MINIMUM WALL THICKNESS	LBS. PER LINEAR FT. • STEEL	LBS. PER LINEAR FT. • ALUMINUM
1 3/8					1 3/8	0.104	1.35	
1 5/8	1.660	0.140	2.27	0.786	1.660	0.111	1.84	
2	1.900	0.145	2.72	0.940	1.900	0.120	2.28	
2 1/2	2.375	0.154	3.65	1.264	2.375	0.130	3.11	
3	2.875	0.203	5.79	2.004	2.875	0.160	4.64	
3 1/2	3.500	0.216	7.58	2.621	3.375	0.160	5.71	
4	4.000	0.226	9.11	3.151				

* + 5% TOLERANCE ACCORDING TO AASHTO M-181

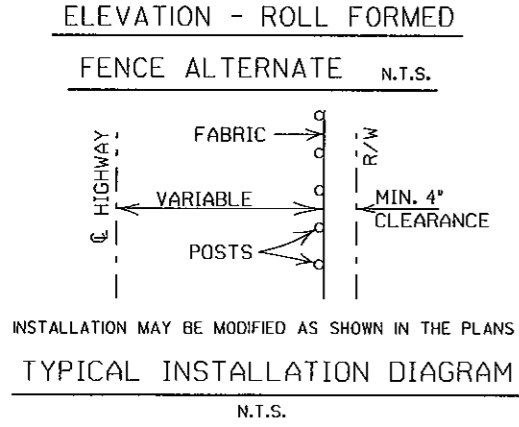
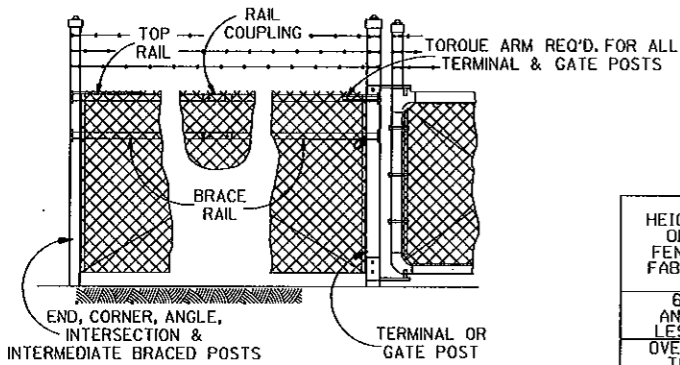
HEIGHT OF FENCE FABRIC	(A)	(B)	(C)			(D)		(E)		(F)			(G)	
	END, PULL CORNER OR BRACE POST	LINE POSTS	TOP RAIL			TENSION WIRE		TENSION BAR		TENSION BAR BAND			BRACE BAND	
	SIZE	SIZE	TIE SPACING	MIN. LENGTH	SIZE	TIE SPACING	SIZE	LENGTH	SIZE	BOLT SIZE	SPACING	SIZE	BOLT SIZE	
6' AND LESS	2 1/2" O.D.	2" O.D.	1 TIE EVERY 1'-2" OF FABRIC HEIGHT	10'-0"	7 GAUGE COIL SPRING WIRE	1 TIE EVERY 1'-0"	MIN. OF 3/8" X 3/4"	MIN. OF 2" LESS THAN FABRIC HEIGHT	3/4" X 0.074	3/8" X 1 1/4"	15" MAX. INTERVAL BETWEEN BANDS	3/4" X 0.105	5/8" X 1 1/4"	
OVER 6' TO 12' INCL.	3" O.D.	2 1/2" O.D.	1 TIE EVERY 2'-0"											

HEIGHT OF FENCE FABRIC	(H)	(I)	(J)		(K)	(L)		(M)	(N)	(O)	(P)
	TIE WIRE	HOG RING	BRACE RAIL SIZE	TIE SPACING	TRUSS ROD	FABRIC SIZE	MESH SELVAGE	GATE FRAME SIZE	HORIZONTAL SUPPORT	HINGE TYPE	GATE POST
6' AND LESS	MIN. OF 12 GA. STEEL OR 9 GA. ALUM.	SAME GAUGE AS FABRIC	1 1/2" O.D.	1 TIE EVERY 2'-0"	MIN. OF 3/8" ROUND WITH TIGHTENERS AND FITTINGS	9 GA. 2"	KNUCKLING AND/OR TWISTING	2" O.D.	1 TIE EVERY 1'-0"	2" O.D.	3" O.D.
OVER 6' TO 12' INCL.										OFFSET	4" O.D.

NOTE: POST SIZES SHOWN ARE FOR STEEL. WHERE ALUMINUM IS PROVIDED, LINE POSTS SHALL HAVE AN OUTSIDE DIAMETER OF 2 1/2" FOR FENCE HEIGHT OF 6' AND LESS, AN OUTSIDE DIAMETER OF 3" FOR FENCE HEIGHT OF 6' TO 12". END, PULL, CORNER OR BRACE POSTS SHALL HAVE AN OUTSIDE DIAMETER OF 3" FOR FENCE HEIGHT OF 6' AND LESS; AN OUTSIDE DIAMETER OF 3 1/2" FOR FENCE HEIGHTS OF 6' TO 12". GATE POSTS WHERE GATE WIDTH IS 12' AND LESS SHALL HAVE AN OUTSIDE DIAMETER OF 3 1/2" FOR FENCE HEIGHT OF 6' AND LESS. ALUMINUM TENSION WIRE SHALL BE 0.192" IN DIAMETER. MINIMUM THICKNESS OF MATERIAL FROM WHICH EXPANSION SLEEVES SHALL BE MADE WILL BE 0.078". POSTS AND RAILS MAY HAVE ANY CROSS-SECTIONAL SHAPE THAT WILL MEET THE REQUIREMENTS OUTLINED IN ASTM F-669.

OTHER DETAILS APPLY TO BOTH STEEL AND ALUMINUM FENCE.

ALL MISCELLANEOUS FITTINGS AND HARDWARE SHALL MEET THE REQUIREMENTS AND PRODUCTION TOLERANCES AS SET FORTH IN ASTM F-626, AASHTO M111, M232 OR M181. 9 GAUGE ALUMINUM WIRE SHALL BE ACCEPTABLE FOR TIEING FABRIC TO TUBULAR AND ROLL FORMED MEMBERS OF STEEL FENCE.



PROPOSED PLANS FOR A.H.T.D.

CHAIN LINK FENCING DETAILS

-----, ARKANSAS DIST. # -----

DRAWING NO. **CL-1**

CHAIN LINK FENCING DETAILS W/ ROLLING GATE

DATE: 9-12-00 REVISED: